



STATE BOARD OF EDUCATION

Antonio L. Borja
Chairperson

Herman M. Atalig, SGM (Ret.)
Vice Chairperson

Gregory P. Borja
Secretary/Treasurer

Andrew L. Orsini
Member

Maisie B. Tenorio
Member

Dora Miura, Ph.D
Teacher Representative

Ronald Snyder, Ed.D
Non-Public School Representative

Ryan Michael Nuera
Student Representative

KEY MANAGEMENT

Alfred B. Ada, Ed.D
Commissioner of Education

Eric Magofna, M.Ed
Associate Commissioner for Administrative Services

Jackie A. Quitugua, M.Ed
Senior Director, Office of Curriculum & Instruction

Yvonne R. Pangelinan, Ed.D
Senior Director, Office of Student Support Services

Rizalina Liwag, Ed.D
Senior Director, Office of Accountability, Research, & Evaluation

Arlene Lizama, CPA, CGMA, MBA
Finance Director

Jacqueline Che
Federal Programs Officer

Lathania Angui
Head Start / Early Head Start Director

Donna Flores, M.S.
Special Education Director

Jesse Tenorio
State Technology Director

Lorraine Catienza
Instructional Technology & Distance Education Director

Lucretia B. Deleon Guerrero
Human Resources Director

Liela Yumul, M. Ed
Family & Community Engagement Director

Randee-Jo Barcinas-Manglona, M. Ed
Communications & Media Program Manager

OUR VISION

The Commonwealth of the Northern Mariana Islands Public School System is a provider of quality education, empowering all individuals to be innovative thinkers and learners.

OUR MISSION

Educating lifelong learners to become productive citizens of a global society.

OUR VALUES

Leadership & Learning
Engagement
Accountability
Diversity
Efficacy
Relationships



OUR STRATEGIC PRIORITIES

- Student Success
- Accountable High Performing Systems
- High Performing Personnel
- Effective & Efficient Operations
- Safe & Caring Schools
- Communications & Community Relations

THE CNMI PUBLIC SCHOOL SYSTEM

(CNMI PSS) was created pursuant to Article 15 of the CNMI Constitution, effective January 11, 1988, and 1CMC Section 2251 et.seq. of 1988. The CNMI PSS is the state education agency for pre-school, elementary, & secondary education programs including special programs in early interventions from birth to three years old & children ages three to four in Head Start.



OUR SCHOOL SYSTEM

SY 22-23 At a Glance



Enrollment	
Early Head Start	55
Head Start	379
Elementary School	3631
Middle School	2117
High School	3108
Total Enrollment	9290

Enrollment K-12 By Ethnicity	
Bangladeshi	185
Bengali	18
Carolinian	496
Caucasian	25
Chamorro	2679
Chinese	308
Chuukese	394
Filipino	1950
Japanese	31
Korean	95
Kosraean	17
Nepalese	10
Palauan	126
Pinglapese	15
Pohnpeian	69
Thai	10
Yapese	70
Two or More Races	1658
Not Stated	671
Other	29
Total Enrollment	8856

*Ethnic groups under <10 are not displayed but are included in the total.

*Early Head Start & Head Start ethnicities are not included in calculations.

Distance Education Enrollment			
Public/Private Schools	Fall 2022	Spring 2022	Summer 2022
CNMI Public Schools	928	969	1182
Participating Private Schools	23	7	43

Information shown on this page has been extracted from **SY2022-2023 Facts & Figures**. For additional information, please contact the Office of Accountability, Research, & Evaluation or visit: www.cnmipss.org

Our Schools & Centers	
Early Intervention	1
Early Head Start / Head start	16
Elementary (K-5)	7
Elementary (K-6)	2
Middle Schools	5
Jr. Sr. High Schools	2
High Schools (9-12)	4

ENROLLMENT FOR SPECIAL EDUCATION

The Special Education Program served 1098 students from birth to 21 years old, in early learning intervention programs to K-12.

EARLY INTERVENTION, HEAD START / EARLY HEAD START, & KINDERGARTEN

Kindergarten is offered at all elementary schools. The CNMI Public School System is a sub-grantor of the Head Start Program through the US Department of Health & Human Services. There are 16 Head Start / Early Head Start Centers total.

The CNMI Public School System also provides services to infants & toddlers (0-3) through its Early Intervention Program, funded under Part C of the Individuals with Disabilities Education Act (IDEA).

Graduation Rate	
SY 18-19 Year 1 - Cohort 2022	722
SY 2021-2022 Total Number of Graduates	733
Percentage of Students from Cohort 2018 who graduated within 4 years* in 2022	75%

*Percentage does not include early graduates.

Senior Exit Survey: Class of 2023		
Question	Yes	No
Did you apply to a two year of four year college/tech/trade school?	113	248
Was money a factor in your decision not to apply?	124	112
Was your GPA a factor in your decision?	49	194
If you plan to move to the United States or another country after high school, do you plan to return to the CNMI?	237	45
Have you taken a career path inventory in high school?	178	183
Has your desired/chosen pathway changed since you were a freshman?	251	110
Did your high school help you plan for college or a career after graduation?	240	121
Do you feel enough extracurricular opportunities were available to you?	260	101

*Source: Senior Exit Survey Reports by Lifetrack Services, Inc.

CERTIFIED & NON-CERTIFIED EMPLOYMENT: EDUCATION & DEGREE

During the SY 2022-2023, the CNMI PSS employed a total of **1,176** employees. Of the total, **596** are instructional staff (e.g., teachers, counselors, librarians) and **580** are non-instructional staff (e.g., teacher aids, administrators, support staff).

PSS Employee Highest Level of Education	
Level	Total
High School Diploma	338
Associate Arts/Associate of Science Degree	116
Bachelor of Arts/Bachelor of Science Degree	388
Master of Arts/Master of Science Degree	323
Doctorate Degree, Ed.D, J.D., Ph.D	23
Other Trades or Specialized Certification	71





OUR FINANCES

Local and Federal



FEDERAL PROGRAMS OFFICE REPORT ON FEDERAL GRANTS FOR SY22-23

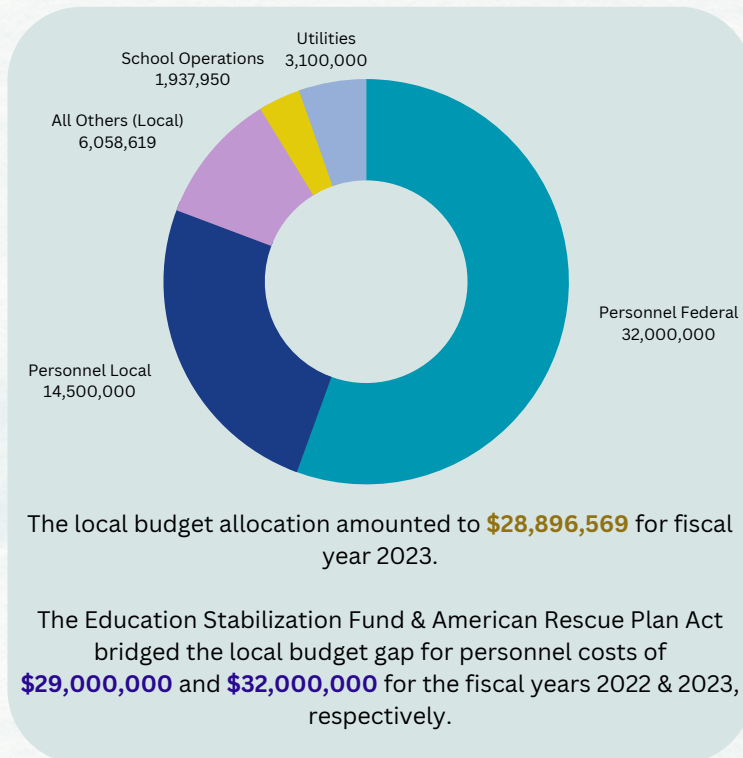
The **CNMI Public School System** administers about **30 federal grants**. The total value of these grants is over **\$315,748,625** for FY 23 (October 1, 2022, through September 30, 2023).

A listing and brief summary of our major federal grants are as follows: (Please note that each federal grant has very specific purposes and can only be used for the purposes as established by federal law and the federal grant agreements.)

The Education Stabilization Fund Part II provides \$61 million to prepare our schools for hybrid learning (online and in-class in small group learning). The Education Stabilization Fund also supports daily classroom sanitization, monitoring the temperature of students and staff, and back-filling a big hole in the local budget.

The Consolidated Grant from the US Department of Education of \$19,350,938 directly supports both our public and private schools. \$6.6 million is allocated to our 20 public schools to target support in improving student achievement and \$2,768,549 to our 13 private schools. In addition, the grant provides for 35 class size reduction teachers, Title I tutorial support; distance education, assessment, and access to technology, funding for several national competitions; and professional development for teachers and school administrators to improve teaching skills in meeting the diverse needs of our students.

The American Rescue Plan (ARP) is our largest grant at \$160 million with a four-year time to expend all funds that end on September 30, 2024. The ARP has enabled PSS to hire additional teachers, School Nurses for the first time in thirty years, school health monitors, ELL teachers, and provide funding to offset the student learning loss during the pandemic through innovative programs such as High Dosage Tutors (college students providing tutorials to students struggling with learning and/or math), laptops and connectivity for our students, replacement school classroom furniture for the first time in the last forty-four years, a fleet of new school buses, school vans to support after school sports and club activities, and several programs that provide mental health counseling to our students and teach coping skills, and most importantly, has enabled PSS to backfill a huge hole in the local budget as the local personnel



cost is \$40 million, yet PSS, across the past three years, has received \$19M, 24M, and \$25M as opposed to the \$45M needed for personnel and all others each year.

Other Major Federal Grants:

- Nutrition Assistance Grant
- The Emergency Food Assistance Program (TEFAP)
- USDA Meal Supplemental Program
- Special Education Programs (Part B and C)
- Head Start / Early Head Start Program
- Project Haligi
- Statewide Longitudinal Data System
- State PREP grant
- Abstinence Education SRAE
- School Emergency Grant
- AmeriCorps
- MAP grant
- Swim for Life Program
- Kagman Immersion Language Project
- Striving Readers
- Congressional Earmark: Bilingual Immersion, Library Expansion, and Health & Wellness
- Stronger Connections
- MHS CTE

HIGHLIGHTS

- During the summer break, elementary, middle, and high school teachers and administrators attended trainings involving the new Houghton Mifflin Harcourt high-quality instructional materials that will be implemented in SY23-24.
- This school year was the first year for PSS to launch its new student information system, Infinite Campus. Infinite Campus contains student administration features, which will help automate the K-12 education records process. For example, attendance, behavior, enrollment, health records, special education records, and school census records can all be managed using Infinite Campus.
- College and Career Pathways was approved by the Board of Education and implemented at different phases in schools. Summertime opened greater opportunities for our students to initiate their pathway choice through partnership and collaboration with NMC, NMTech, GMTC, Island Training Solution, and the Chamber of Commerce with industry-based partners.
- This school year, the PSS State Longitudinal Data System's (SLDS) Early Warning System in Reading launched its online platform to be used by school administrators and staff to identify students needing immediate interventions to help meet their targeted academic goals and needs.
- Under the Student Support Services Mental Health Program, 18 Schools participated in the non-violent Crisis Response and Intervention training and learned trauma-informed principles when responding to crises while prioritizing non-physical interventions to maintain a safe, respectful and supportive environment.
- Under the Facilities Development & Management Department, all FEMA-funded projects are ongoing. This is a total of 21 projects. 2 projects are at about 98% completion, 6 projects are at about 80% completion, 3 projects are at about 50%, and the remaining are in the design phase.



Tinian Elementary Students engaged with Project Based Learning



Student Support Services Disabilities Sports Festival



Garapan Elementary School new cafeteria groundbreaking ceremony



Da'ok Academy 2023 Graduation Ceremony

CHALLENGES

- Admiral Herbert G. Hopwood Middle School faced a loss of instructional time due to a double sessions bell schedule caused by unrepaired typhoon-damaged classrooms.
- Student vaping seems to be a prevalent problem throughout many PSS schools. Educational campaigns about e-cigarettes have been launched to help combat this issue.
- Rota schools face challenges in procurement and supplies of much-needed materials to support learning caused by a lack of variety of vendors and venues to hold significant events.

SY 22-23 State Level "Of the Years"

**CNMI PSS State
Teacher of the Year
Donovan Tudela**
Saipan Southern High School

**CNMI PSS State
Counselor of the Year
Frank Rabauliman**
Admiral Herbert G. Hopwood Middle School

**CNMI PSS State
Teacher Aid of the Year
Carleen Lizama**
Garapan Elementary School

**CNMI PSS State
Administrative Staff of the Year
Estanislao Limes**
William S. Reyes Elementary School

**CNMI PSS State
Instructor of the Year
Jennie Magofna**
Gregorio T. Camacho Elementary School

**CNMI PSS State
Librarian of the Year
Catherine Borja-Flores**
Dandan Middle School

**Published
October 2023**

Please contact the office of the Commissioner of Education for more information regarding the PSS **FY2023 Citizen Centric Report** at (670) 237-3061

Prepared By:
Office of Accountability, Research, & Evaluation