

Medical Referral Services

Office of the Governor

FY 2020 Citizen Centric Report

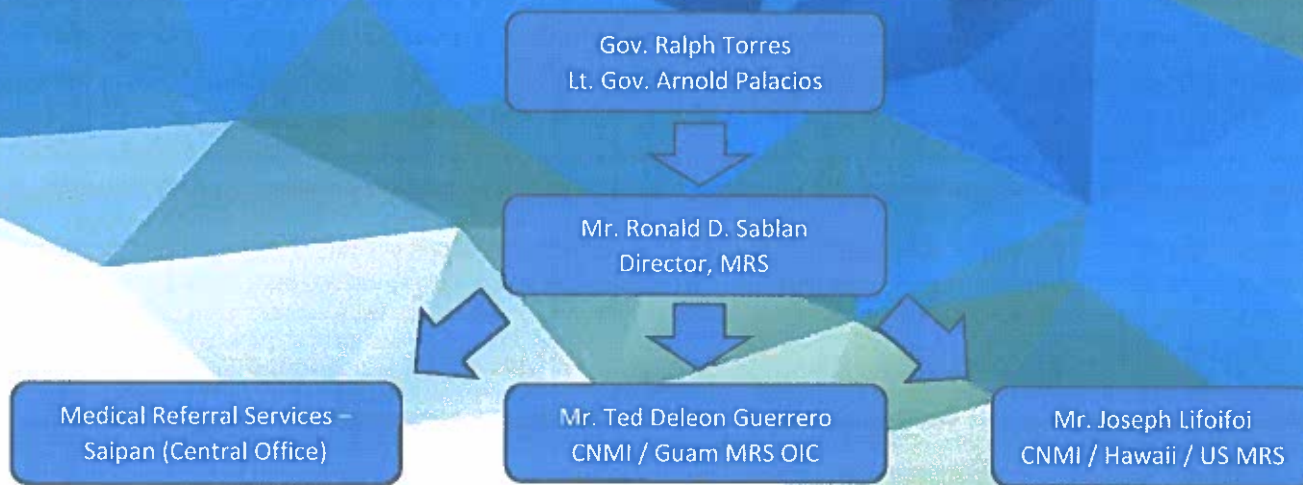


About us

The **Medical Referral Program** is managed by **Medical Referral Services** under the Office of the Governor, are designed to provide residents of the CNMI with the means of receiving medical care and treatment for conditions which are Life Threatening and not readily available within the Commonwealth. By sending patients approved for Medical Referral to established a referral health care facilities for extended medical care, specialties and procedures attainable to enhanced patient's health

History of Medical Referral Program, PL 16-51 transferred the Medical Referral Program from the Department of Public Health to the Commonwealth Health Corporation. Executive Order No. 2013-09 (effective May 02, 2013) transferred the Medical Referral Program from the Commonwealth Health Corporation to the Office of the Governor. See 35 Com. Reg. 33542. Section 1.1 of the 2013 amended regulation (codified at Section 75-50-005) specified that these new regulations were to be codified at subchapter 140-10.7. However, because this office is now under the supervision of the Governor, the Commission has moved these regulations to Chapter 75-50.

Patients are sent off Island for their medical care approved to Guam, Hawaii, United States, Philippines, Korea and Taiwan based on each diagnose. Also depending on their Insurance coverage, patients are sent to their approved Insurance coverage destination.



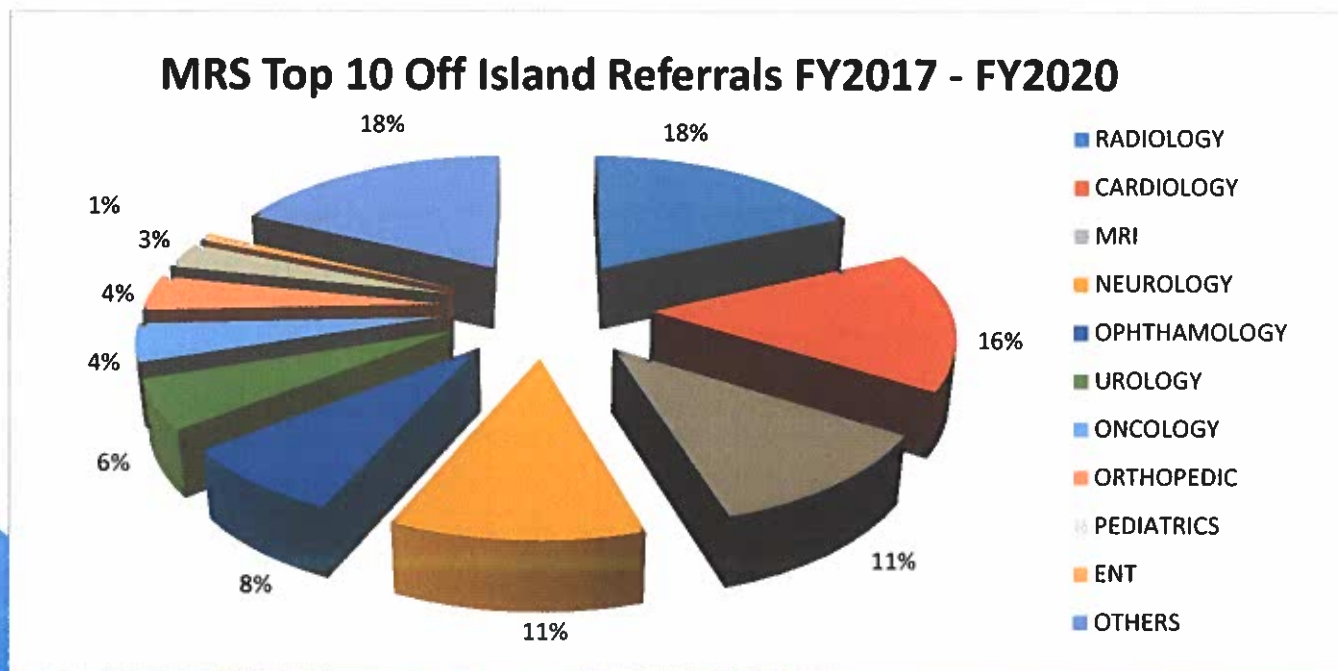
Mission Statement

Type of Service of Program: To establish, facilitate and regulate approved medical referrals of CNMI patients to a recognized referral health care facility outside the CNMI for their extended medical care.

Purpose of Program: Medical Referral Services are designed to provide residents of the CNMI with the means of receiving medical and treatment specialty care, which is not available within the Commonwealth of the Northern Mariana Islands.

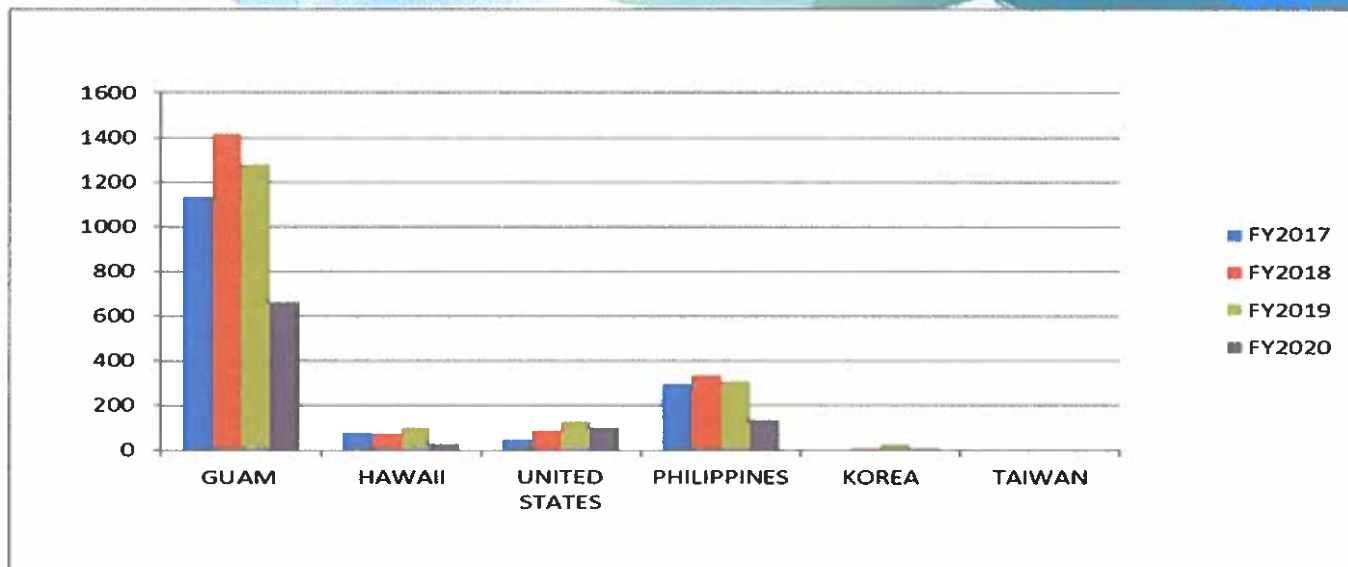
As shown on **Table 1.1**, primary reason for medical referral for off Island for FY2017 - FY2020 are care related to Radiology, Cardiology, MRI, Neurology and Ophthalmology, due to lack of medical specialists available within the CNMI.

Table 1.1



As shown on **Table 1.2**, number of Medical Referral patients by Area/Location from FY2017 – FY2020. Shows a decrease in number of Medical Referral patients sent off Island for medical treatment not readily available within the Commonwealth, due to Commonwealth Healthcare Corporation (CHCC) have more specialized Physician on board. Example an Oncologist, and ENT. Also closure of clinics, suspension of airlines because of the COVID-19 pandemic.

Table 1.2



As shown on **Table 1.3**, MRS FY2017 – FY2020 Breakdown by Count and Expenses Statistics, reflects a decrease in expense of Medical Referral cost sent off-Island due to the unforeseen COVID-19 Pandemic.

Table 1.3

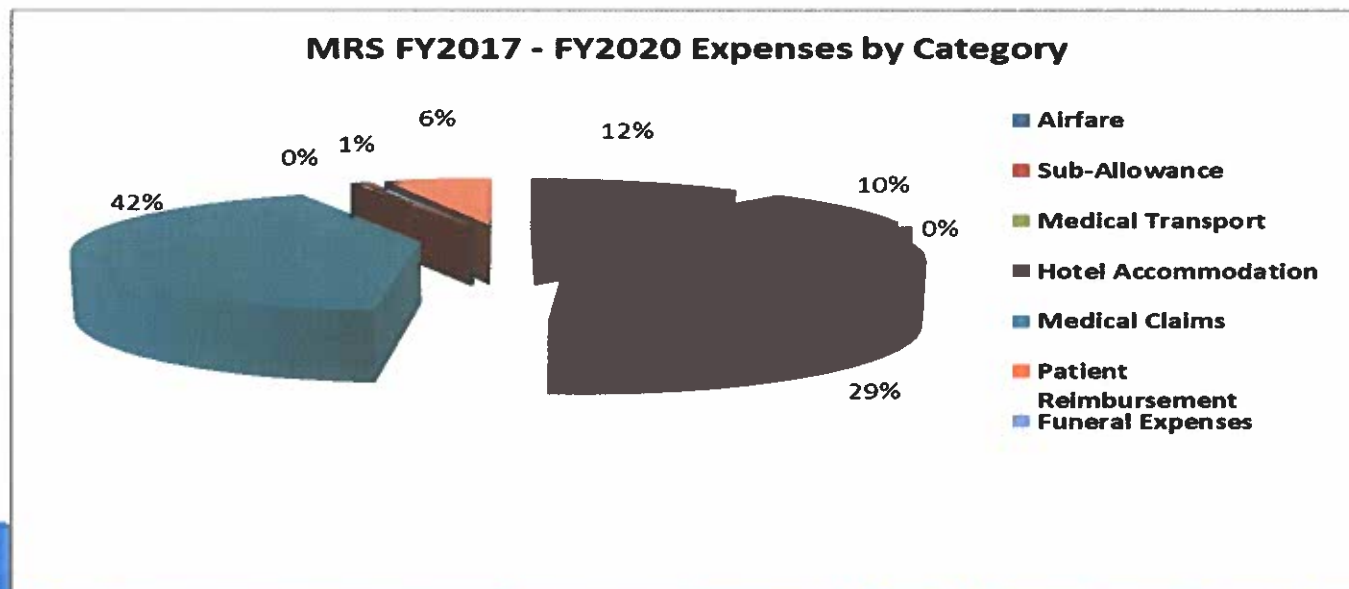
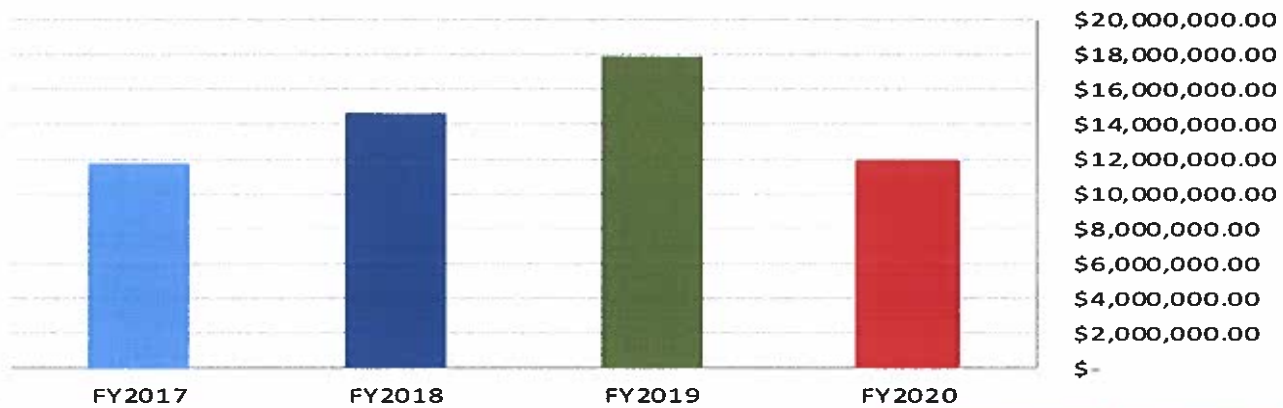


Table 1.4 FY2017 – FY2020 Total Expenses

MRS Fiscal Year Total Expenses



FY2020 Challenges

- **The Covid-19 pandemic.** Developed and we implemented to support new protocols set by Covid-19 Task Force in the CNMI as well as various locations where health care providers accept our CNMI patients for their medical care treatment.
- **Shortage of man power.** Due to furlough and seperation/termination of MRS employees. In need of additional staff for all MRS Satellite offices (Guam, Hawaii) and main office of Saipan due to increase of Medical Referral cases.
- **MRS Budget.** Increase in MRS funding due to rise and cost of airfaire, professional services fee and increase in number of patients.

FY2021 Goals

- Exploring on new facilities with better treatment and rates to save funds.
- Collecting payments from patient with outstanding Promissory Notes to generate revenue towards our account to keep afloat.
- Work closely with the Governor, Legislature and the Secretary of Finance regarding timely payments towards the medical facilities to avoid doors closing on our patients of the Commonwealth of the Northern Mariana Islands.
- To lobby for additional funding to cover medical expenditures and to seek more FTE.